

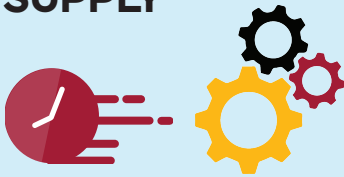
WHAT is TSMO?

An integrated approach to programmatic optimization of **planning, engineering, operations, and maintenance** to effectively manage and operate existing facilities and systems and maximize their full service potential.



WHY TSMO?

SUPPLY



System operating at/over capacity
Multiple priorities (SOGR, Safety, Mobility, Capacity, Economy)

VS

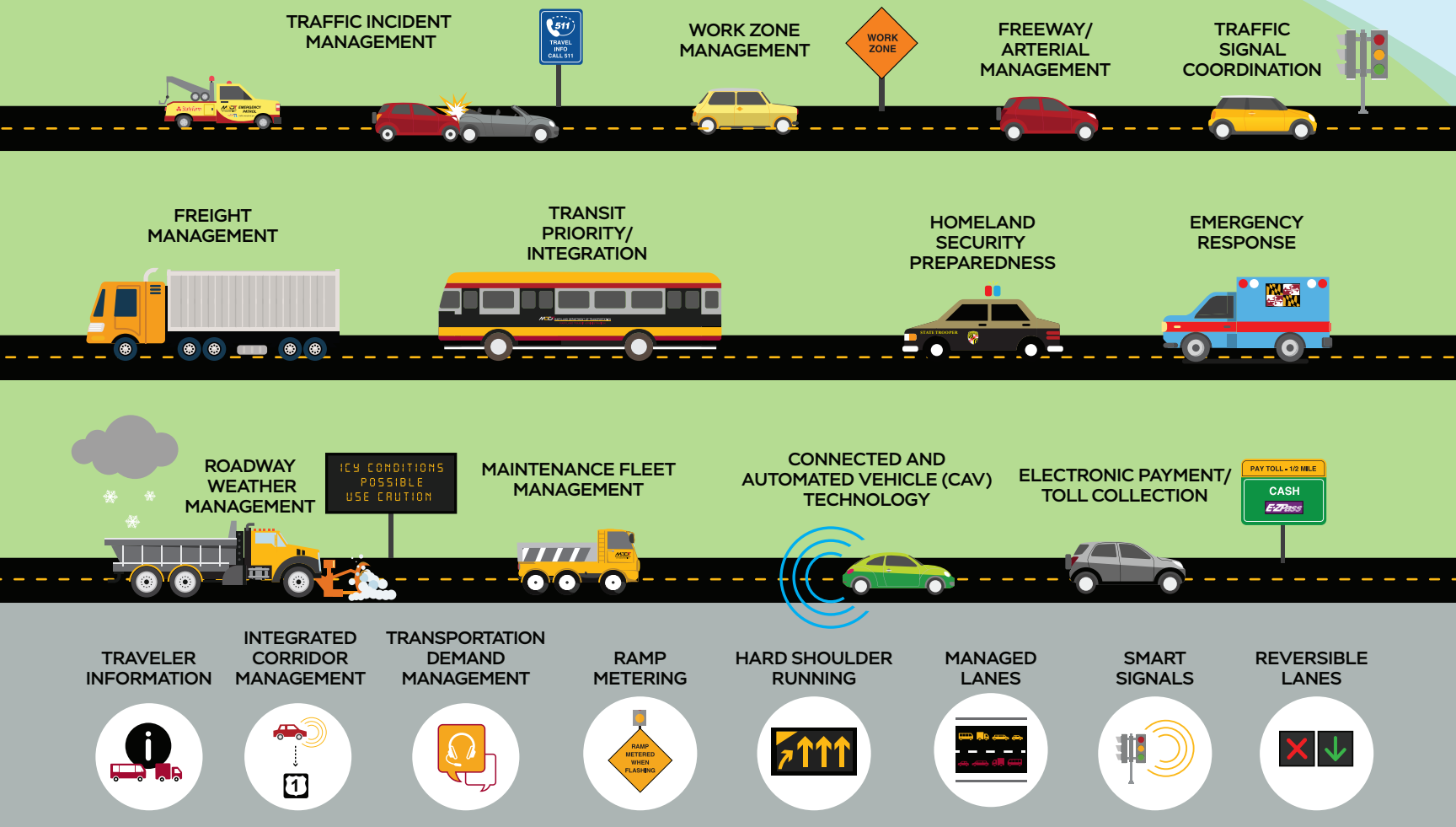
DEMAND



MD VMT and congestion levels at **all time high** - one of the most congested regions in US
Technology is playing a huge role for travel decisions (commute, shop, other)

HOW is TSMO implemented?

Through the consideration and addition of any or a combination of the following as a transportation solution



TSMO makes sense.

Compared to capacity expansion, TSMO strategies:

- Address all sources of congestion - recurring + non-recurring
- Are inexpensive and cost-effective
- Take little or no extra right-of-way
- Can be deployed in months rather than years